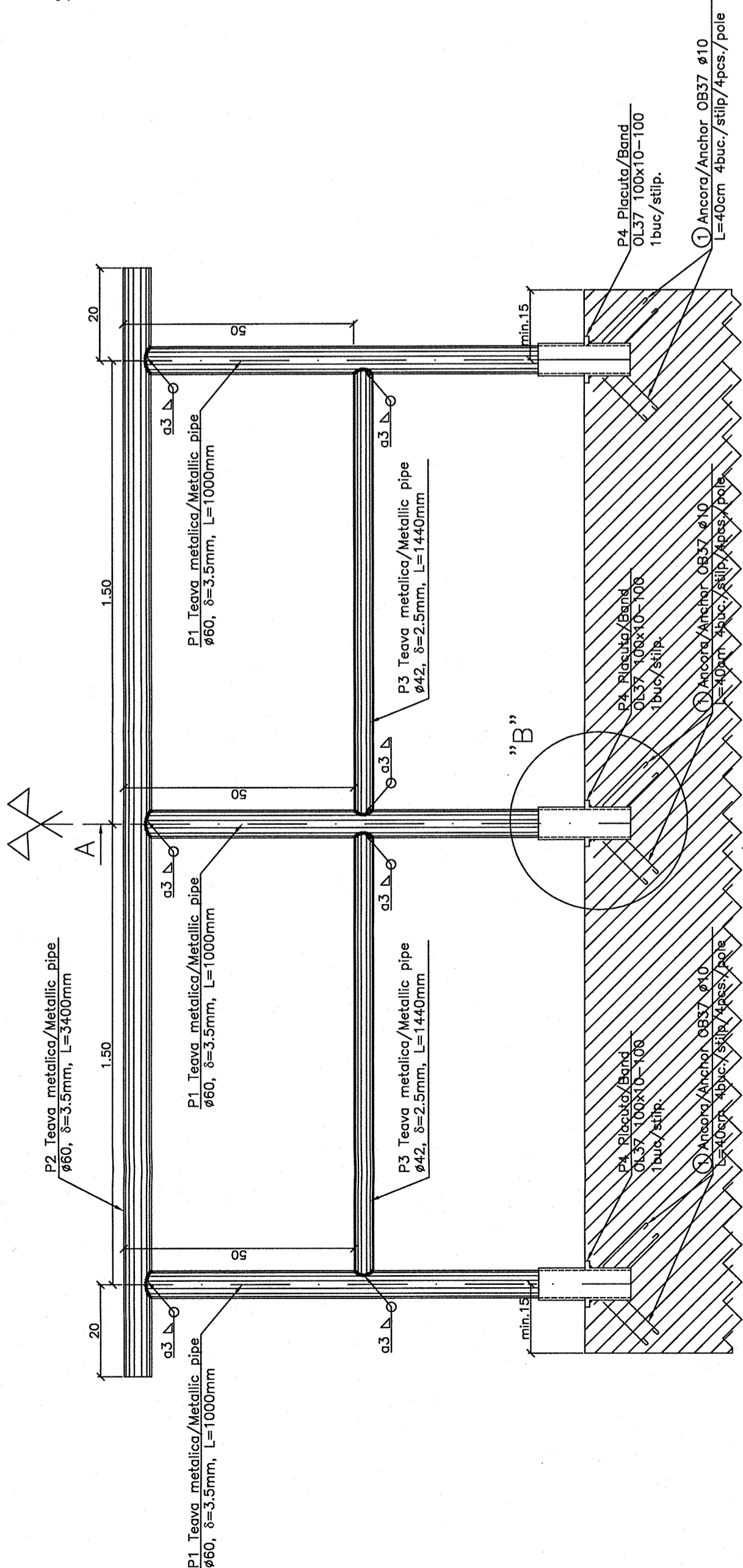
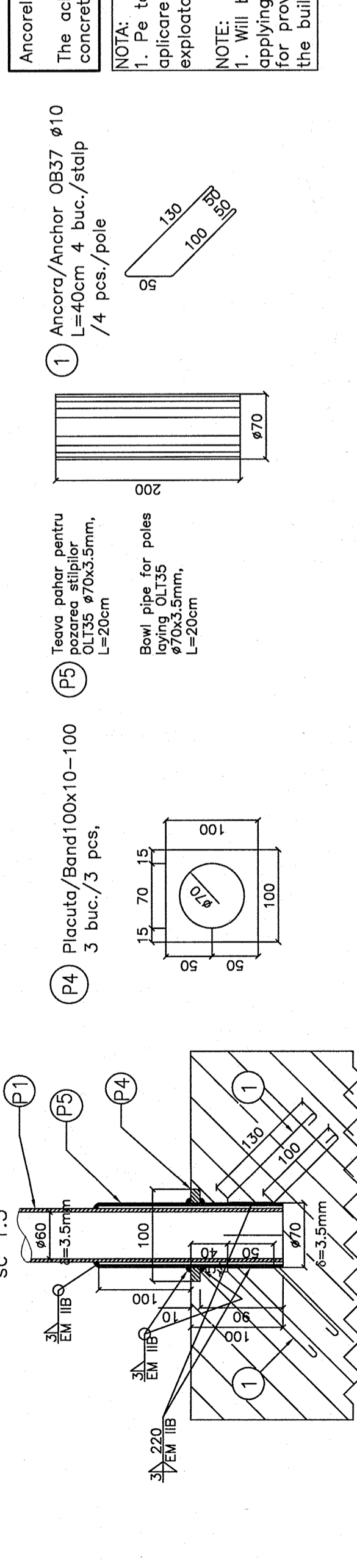


DETAIU PENTRU FIXAREA PARAPETULUI IN BETONUL NOU FIXING THE HAND RAIL POLE IN THE NEW CONCRETE



DETAIU B/B DETAIL
SC 1:5



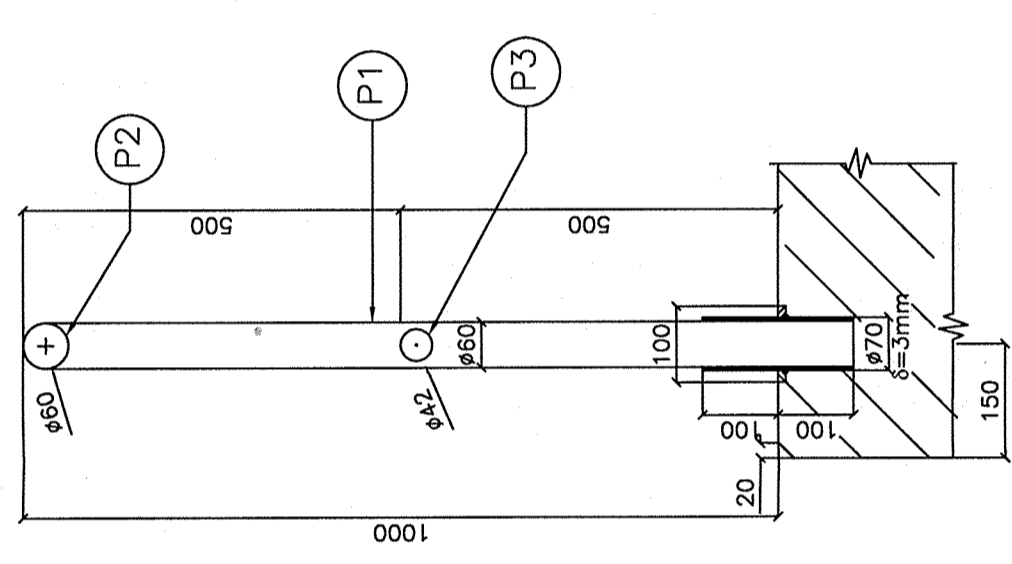
Ancorele cu placutele metalice se monteaza inainte de turnarea betonului.
The anchors with the metallic plate have to be mounted before casting the concrete.

NOTA:
1. Pe toate piesele metalice se va aplica o protectie anticoroziva. Tehnologia de aplicare va respecta Ordinul MLPAT nr. 52/N/1998 "Ghid de proiectare, executie si exploatare privind protectia impotriva coroziunii a constructiilor metalice."
NOTE:
1. Will be applied anti-corrosive protection on all metallic pieces. The technology for applying anti-corrosive protection will respect the Order MLPAT no. 52/N/1998 "Guide for provision, execution and exploitation concerning the protection against corrosion for the buildings made of steel."

OSERVATIE:
-Sudura rostului de montaj se va executa numai pe o parte, dupa pozarea elementelor trotuarului.
-Sudura pieselor P1 si P4, se va face pe santier in pozitie definitiva.
OBSERVATION:
-Welding the execution joint shall be executed only on one side, after laying the elements of the sidewalk.
-Welding pieces P1 and P4 shall be executed on site in final position.

Sistemul de protectie anticoroziv se compune din 3 straturi, conform Caietului de Sarcini:
- stratul primar sau grundul (min. 50µm);
- stratul intermediar (min. 50µm);
- stratul de finisare (min. 75µm).
The protection system is composed by 3 layers, in according to the Technical Specifications:
- primary layer or the flat coat (min. 50µm);
- intermediary layer (min. 50µm);
- finishing layer (min. 75µm).

SECTIUNE A-A/SECTION A-A
SC 1:10

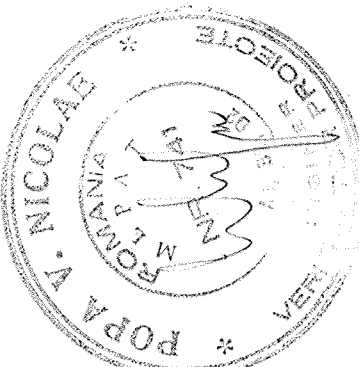


EXTRAS DE ARMATURA PENTRU UN PANOU DE PARAPET L=3.00m
REINFORCEMENT TABLE FOR ONE HANDRAIL PANEL L=3.00m

Marca/ Position	Diam.	Bucati/ Pieces	Lungime/ Length	Lungimi/Diameter OB 37 Ø10
1	10	12	0.40	4.80
Total Lungime/Diameter				
Total Length/Diameter				
Greutate/Lungime (kg/m)				
Weight/Length (kg/m)				
Greutate/Diameter (kg)				
Weight/Diameter (kg)				

EXTRAS DE MATERIAL METALIC PENTRU UN PANOU DE PARAPET L=3.00m
METALLIC MATERIAL TABLE FOR ONE HANDRAIL PANEL L=3.00m

Pozitia/ Position	Denumire/Denomination	Bucati/ Pieces	Dimensiuni/ Dimensions (mmxmm)	Lungime/ Length (m)	Greutate/Weight	
					OLT 35	OL 37-3k
1	Teava metalica/Metallic pipe	3	Ø60x3.5	1.00	4.877	14.63
2	Teava metalica/Metallic pipe	1	Ø60x3.5	3.40	4.877	16.60
3	Teava metalica/Metallic pipe	2	Ø42x2.5	1.44	2.43	7.00
4	Placuta metalica/Metallic band	3	100x10	0.10	2.43	7.850
5	Teava pahar/Bowl pipe	3	Ø70x3.5	0.20	2.43	1.46
Greutate tip otel / Weight for type of steel (KG)					39.70	2.50
3% Sudura / Welding (KG)					1.20	0.10
Greutate totala tip otel / Total weight for type of steel (KG)					40.90	2.60
Greutate totala material metalic / Total weight for metallic material (KG)						43.50



Contract / Contract No. 1303/2007	Contract / Contract No. 1303/2007
Beneficiary / Beneficiar ROMANIAN RAILWAY NATIONAL COMPANY	Contracting Authority / Autoritatea Contractanta / CONTRACTING AUTHORITY CFU
Date / Data 05.2009	Project financed by / Proiect finantat de UNIONEA EUROPEANA EUROPEAN UNION
Phase / Faza 7P+DDE 7P+DD	Ministerul Economiei si Finantelor Oficiul de Plati si Contractare Phare Ministry of Economy and Finance Phare Payments & Contracting Office
Intocomit / Committed Ing. Cristina Vara-Oros	Project financed by / Proiect finantat de EUROPEAN UNION
Verificat / Checked Ing. Viorel ALDESCU	Ministerul Transporturilor Ministry of Transport
Seaf echipa / Team leader Ing. Stelian Vara-Oros	POS Transport 2007-2013
	PORTOFOLIUL DE PROIECTE PHARE CES 2005 / PHARE CES 2005 PROJECTS PORTFOLIO LOT 1
	Asistenta tehnica pentru pregatirea unor lucrari de reabilitare pentru tuneluri si poduri de cale ferata Technical assistance for preparing rehabilitation works required by railway tunnels and bridges
	Denunsiere desen / Drawing Title 1:100
	Data / Date 05.2009
	Cod desen / Drawing Code PT 23
	Nr. / No. 09